



Marlo Glass

Production Design and Miniatures



PORTFOLIO



DEATH'S HOUSE

1/4th Scale model of house and surroundings.

Wire, Bristol-board, paper, cardboard, paint, gels, grass, and pebbles.



SAVANNAH HOUSE FACADE

1:24 Scale model of a house in Savannah, GA.
Foam core, Bristol board, clear plastic, and paint.



MANTA SPACESHIP KITBASH

1/16th Scale. 1'x10" plastic assembly.

Combined various scale models of a jet, boat, and car into an original spaceship design.

Background done with Photoshop.



INGRID

Approx. 18" tall. Birch tree. Character concept sculpture.
Clay, wood, paper mache, wire, tissue paper, and paint.

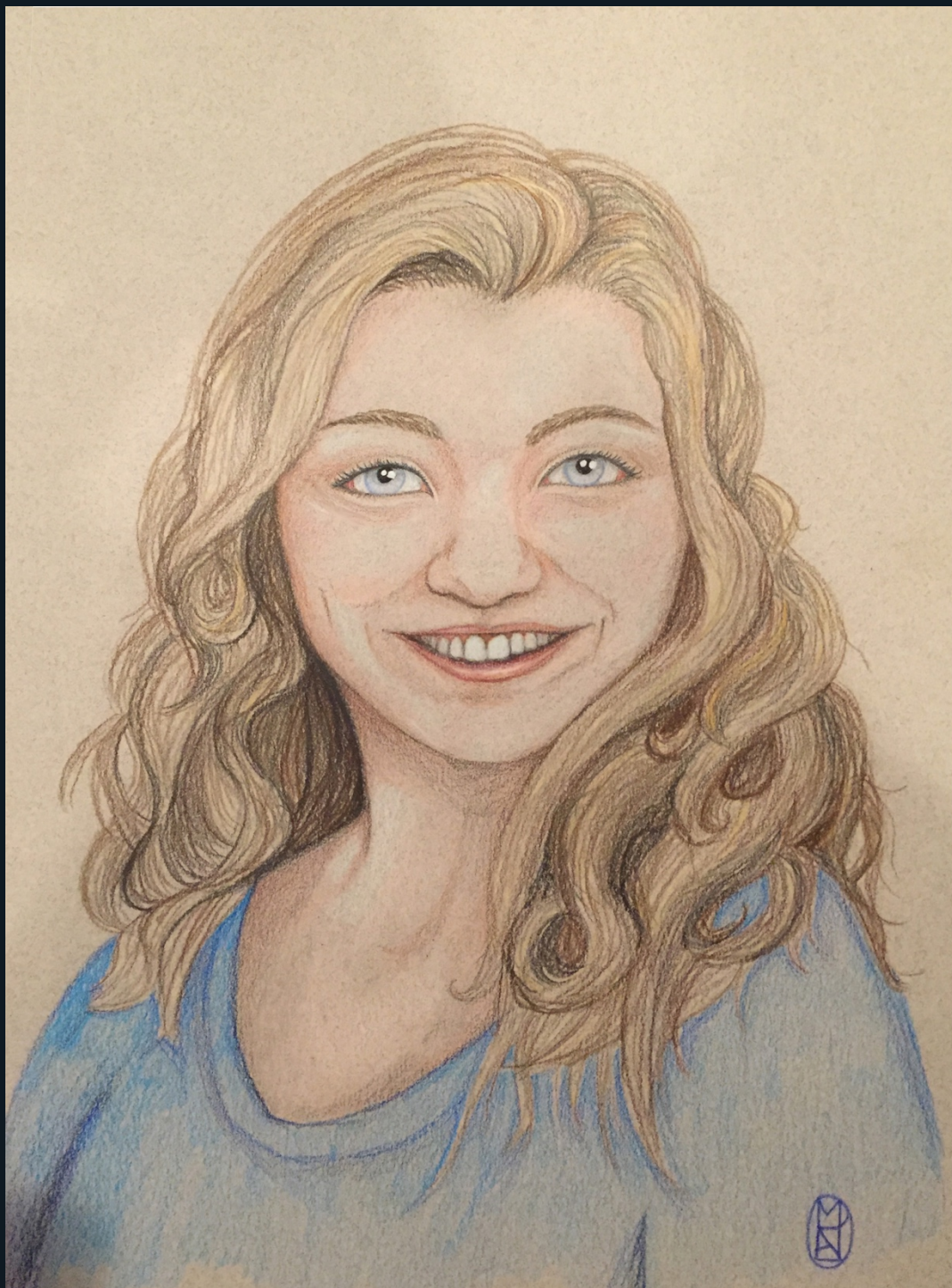


VECCHIA

Approx. 16 1/2" tall. Redwood. Character concept sculpture.
Wood, clay, cardboard, gels, and paint.



SOBO
14" tall. Japanese Cherry Blossom. Character concept sculpture.
Wood, clay, paint, wire, and tissue paper.



SISTER'S PORTRAIT
9"x12" Colored pencil on tan paper.



Scarlet bean.
Botanist's Office
Marlo Glass

BOTANIST'S OFFICE

Set design for an office space in 1906. Made with SketchUp, VRAY, and Photoshop.

You Can't Take It With You

Act III Scene I - Mr. Kirby Joins the Vanderhoffs



by Marlo Glass

'YOU CAN'T TAKE IT WITH YOU' SET
Set design for the Vanderhoff house.
Made with SketchUp, VRAY, and Photoshop.



ANGLER FISH FALLS IN LOVE WITH A LANTERN
Image composite. Made with Photoshop.

THANK YOU!

A handwritten signature in red ink, appearing to read "Marlo" followed by a stylized flourish.

intricateglass@gmail.com

(309)573-9819

intricateglass.wixsite.com/glassdesign